

IP-COM
World Wide Wireless

G5328X

L3 Managed Switch With 4-Port 10G SFP+

G5328X

L3 Managed Switch With 4-Port 10G SFP+

Product Introduction

G5328X is a layer-3 managed switch designed by IP-COM. Based on high-performance connections, it provides twenty-four 10/100/1000Base-T Ethernet ports and 4 independent 10G SFP+ ports. Equipped with a developed hardware structure and software platform, it features a powerful processing capacity and a complete security protection mechanism, as well as various means for maintenance and management. With these advantages, it fully meets the needs of high-density connections and high-performance aggregation, ideal for the aggregation layer or core layer of such networking scenarios as SMBs and hotels.



Key Features

- * 10/100/1000Base-T Ethernet port x 24 Independent 10G SFP+ port x 4.
- * 16K MAC address table and MAC address auto-learning.
- * 12 Mb large buffer queue.
- * Supports layer-3 management features, such as IPv4/IPv6 static routing protocol, dynamic routing protocols (RIP, OSPF) and DHCP server.
- * Supports layer-2 service features, such as VLAN, IPv4/IPv6 ACL, QoS, IGMP, SNMP and Telnet.
- * Equipped with a built-in 6 kV professional lightning protection power and a 19-inch/1 U standard rack-mounted shell.

Product Features



Multiple routing protocols

The switch supports static routing and such dynamic routing protocols as RIP and OSPF. Users can select static routing or dynamic routing based on their networking demands.



IPv4 and IPv6 protocols

With sufficient IP addresses offered through IPv4 and IPv6 dual stack, the switch supports SLAAC and requires no manual configuration, achieving plug and play.



Cloud management

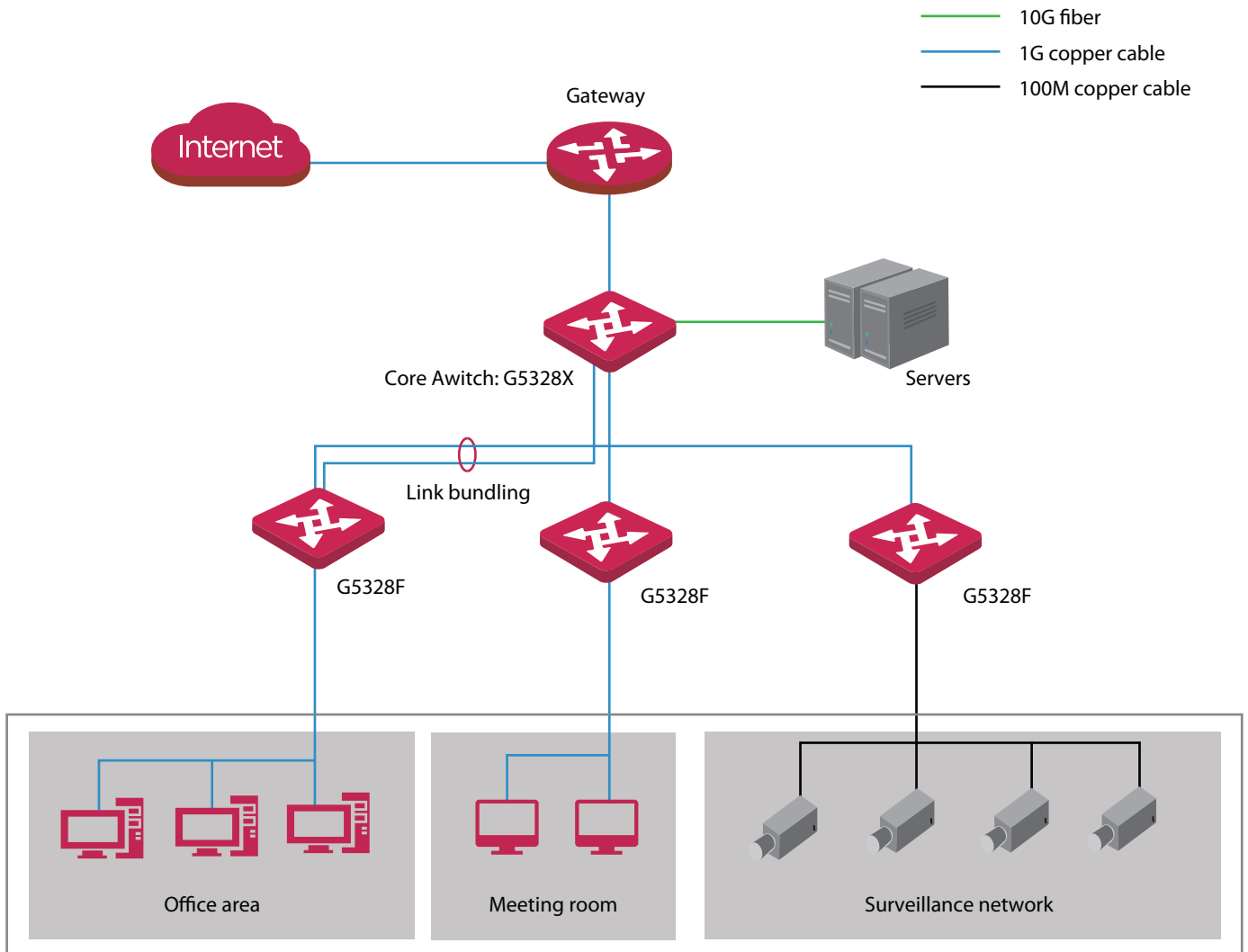
The ProFi cloud platform offers remote management, configuration and maintenance functions, such as fault detection and troubleshooting, log reporting and network status monitoring, guaranteeing the stable operation of the network.



Topology visualization

The system can generate the network topology automatically. It supports IP camera discovery based on ONVIF protocol and network device discovery based on LLDP, as well as online/offline status detection for all devices in the network, which improves the LAN operation and maintenance efficiency and also reduces the maintenance cost.

Application Scenarios



Packaging

| Hardware specifications | |
|---------------------------|--|
| Product Model | G5328X |
| Network standards | IEEE 802.3, IEEE 802.3u, IEEE 802.3ab, IEEE 802.3ad, IEEE 802.3ae, IEEE 802.3z, IEEE 802.3x, IEEE 802.1p, IEEE 802.1q, IEEE 802.1w, IEEE 802.1d, IEEE 802.1s |
| LED indicators | One Link/Act LED indicator for each port One Power LED indicator for each device One SYS LED indicator for each device |
| Fixed ports | 10/100/1000Base-T Ethernet port x 24 10G SFP+ port x 4 |
| Port lightning protection | ≥ 6kV |
| Forwarding mode | Store-and-forward |
| MAC address table | 16K |
| Input voltage | 100 - 240V AC 50/60Hz |
| Dimensions (L x W x H) | 440 mm x 179.6 mm x 44 mm |
| Environment | Operating temperature: 0°C - 45°C Storage temperature: -40°C - 70°C Operating humidity: (10% - 90%)RH, non-condensing, Storage humidity: (5% - 90%)RH, non-condensing |
| Software specifications | |
| Security features | Supports ARP receiving limit Supports discarding unknown MAC addresses Supports DoS attack defense Supports 802.1x security authentication Supports RADIUS authentication |
| VLAN | Supports IEEE 802.1Q VLAN Supports VLAN layer-3 interfaces Supports three port modes: Access, Trunk and Hybrid |
| DHCP | Supports DHCP server Supports DHCP relay Supports DHCP snooping Supports Option 82 policy configuration |
| Routing | Supports inter-VLAN routing Supports IPv4 static routing Supports RIPv1/v2 dynamic routing protocol Supports OSPF dynamic routing protocol Supports dynamic ARP and static ARP Supports ARP aging configuration |
| IPv6 | Supports IPv6 static routing Supports ICMPv6 Supports IPv6 ND Supports IPv6 Ping test and IPv6 Tracert test |

Packaging

| | |
|--------------------------------|---|
| Port aggregation | <ul style="list-style-type: none"> Supports static aggregation Supports LACP dynamic aggregation Supports a maximum of 32 aggregation groups and a maximum of 8 member ports in each group |
| STP (Spanning Tree Protocol) | <ul style="list-style-type: none"> Supports IEEE 802.1d STP (Spanning Tree Protocol) Supports IEEE 802.1w RSTP (Rapid Spanning Tree Protocol) Supports IEEE 802.1s MSTP (Multiple Spanning Tree Protocol) Supports edge ports Supports BPDU statistics Supports BPDU Guard, BPDU Filter, Root Guard, Loop Guard, and Loopback-detection |
| Multicast | <ul style="list-style-type: none"> Supports IGMP Snooping V1/V2/V3 Supports fast leave feature on ports |
| Port mirroring | <ul style="list-style-type: none"> Supports N: 1 port mirroring |
| QoS | <ul style="list-style-type: none"> Supports SP (Strict Priority) Supports SWRR (Simple Weighted Round Robin) Supports WRR (Weighted Round Robin) Supports 802.1p port trust mode Supports DSCP port trust mode Supports a maximum of 8-queue service quality mapping Supports Tail Drop Supports storm suppression Supports port speed limit |
| ACL | <ul style="list-style-type: none"> Supports MAC ACL Supports IPv4 ACL Supports IPv6 ACL |
| Loading and upgrade | <ul style="list-style-type: none"> Supports FTP/TFTP/HTTP upgrade Supports configuration import and export |
| Cloud management | <ul style="list-style-type: none"> Supports configuration delivery from ProFi cloud platform Supports log reporting and fault detection Supports remote maintenance: reboot, backup, upgrade |
| Local visualization management | <ul style="list-style-type: none"> Supports router, switch, AP, IP camera discovery Supports automatic generation of topology Supports online/offline status detection for devices |
| Management and maintenance | <ul style="list-style-type: none"> Supports Telnet configuration and Console port configuration Supports SNMP V1/V2/V3 Supports web management and maintenance Supports IPv4 Ping&Tracert network test |
| Certificates | <ul style="list-style-type: none"> CCC, FCC, CE, RoHS |

IP-COM
World Wide Wireless

IP-COM NETWORKS CO., LTD.

Tower E3, No.1001, Zhongshanyuan Road,
Nanshan District, Shenzhen, China. 518052
Service: info@ip-com.com.cn
Inquiry: marketing@ip-com.com.cn
Tel: +86-755-27653089