

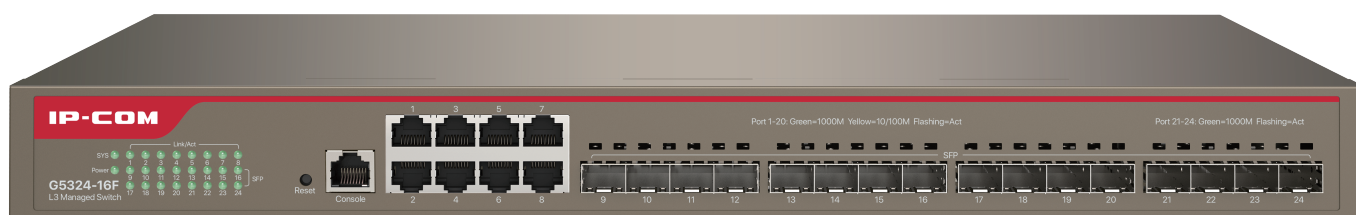
# G5324-16F

L3 Cloud Managed Switch

# G5324-16F

## L3 Cloud Managed Switch

---



## Products Description

G5324-16F is a layer-3 cloud managed switch designed by IP-COM with multiple SFP ports. It provides high-performance connections with 8 10/100/1000Base-T Ethernet ports and 16 independent 1000Base-X SFP ports. Equipped with the developed hardware structure and software platform, it features a powerful processing capacity and a complete security mechanism, as well as various means for maintenance and management. With these advantages, it fully meets the needs of high-density connections and high-performance aggregation, ideal for the aggregation layer or core layer of such networking scenarios as enterprises, hotels, and small and medium-sized parks.

## Product Features

---



### Routing Protocol

The switch supports static routing protocol which supports layer-2 isolation and layer-3 intercommunication, thus achieving efficient and fast layer-3 forwarding.



### SFP Ports Aggregation

The switch has 16 independent Gigabit SFP ports, which meets the requirements of optical fiber aggregation for such networking scenarios as parks, schools and large hotels. It features a flexible networking design, and can be used for long-distance fiber optic networking which leads to less transmission loss.



### Cloud Management

The ProFi cloud platform offers remote management, configuration, upgrade and maintenance functions, including fault detection and troubleshooting, log reporting and network status monitoring, which guarantees stable operation of the network.



### Visualization

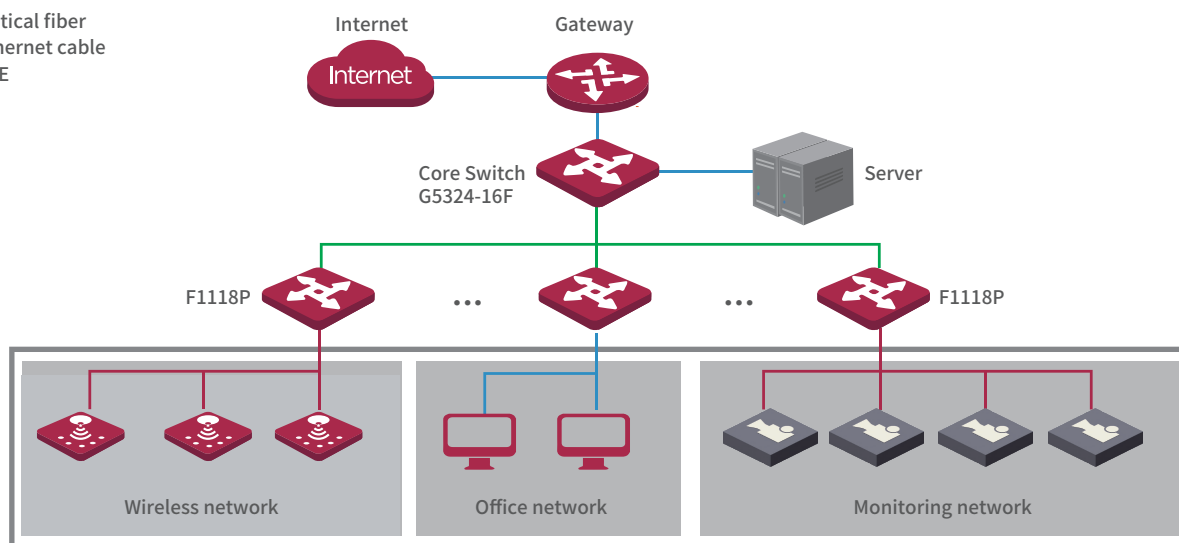
The system can generate a network topology automatically. It supports IP camera discovery based on ONVIF protocol and network device discovery based on LLDP, as well as online/off-line status detection for all devices in the network, which improves the LAN operation and maintenance efficiency and also reduces the maintenance cost.

## Key Feature

- Comply with IEEE 802.3, IEEE 802.3u, IEEE 802.3ab, IEEE 802.3ad, IEEE 802.3z, IEEE 802.3x, IEEE 802.1p, IEEE 802.1q, IEEE 802.1w, IEEE 802.1d, and IEEE 802.1s standards.
- 8 10/100/1000Base-T Ethernet ports  
16 independent 1000Base-X SFP ports
- 16K MAC address table and MAC address auto-learning
- 12Mb large buffer
- Support layer-3 management features, such as IPv4 static routing protocol and DHCP server
- Support layer-2 service features, such as VLAN, ACL, QoS, IGMP, SNMP and Telnet
- Support ProFi cloud management and local visualization management

## Application Scenarios

- Optical fiber
- Ethernet cable
- PoE



## Hardware specifications

Product Model	G5324-16F
Network standards	IEEE 802.3, IEEE 802.3u, IEEE 802.3ab, IEEE 802.3ad, IEEE 802.3z, IEEE 802.3x, IEEE 802.1p, IEEE 802.1q, IEEE 802.1w, IEEE 802.1d, and IEEE 802.1s
LED indicators	One Link/Act LED indicator for each port One Power LED indicator One SYS LED indicator
Fixed ports	10/100/1000Base-T Ethernet port x 8 1000Base-X SFP port x 16
Lightning protection	≥ 6kV
Forwarding mode	Store-and-forward
MAC address table	16K
Input voltage	100 - 240V AC 50/60Hz
Dimensions (L x W x H)	440 mm x 179.6 mm x 44 mm
Environment	Operating temperature: 0°C - 45°C Storage temperature: -40°C - 70°C Operating humidity: (10% - 90%)RH, non-condensing Storage humidity: (5% - 90%)RH, non-condensing

## Software Specifications

Security features	Support ARP receiving limit Support discarding unknown MAC addresses Support DoS attack defense Support 802.1x security authentication Support RADIUS authentication
VLAN	Support IEEE 802.1Q VLAN Support VLAN layer-3 interfaces Support three port modes: Access, Trunk and Hybrid
DHCP	Support DHCP server Support DHCP relay Support DHCP snooping Support Option 82 policy configuration
Routing	Support inter-VLAN routing Support IPv4 static routing Support dynamic ARP and static ARP Support ARP aging configuration
Port aggregation	Support static aggregation Support LACP dynamic aggregation Support a maximum of 32 aggregation groups and a maximum of 8 member ports in each group

## Software Specifications

STP (Spanning Tree Protocol)	<ul style="list-style-type: none"> <li>Support IEEE 802.1d STP (Spanning Tree Protocol)</li> <li>Support IEEE 802.1w RSTP (Rapid Spanning Tree Protocol)</li> <li>Support IEEE 802.1s MSTP (Multiple Spanning Tree Protocol)</li> <li>Support edge ports</li> <li>Support BPDU statistics</li> <li>Support BPDU Guard, BPDU Filter, Root Guard, Loop Guard, and Loopback-detection</li> </ul>
Multicast	<ul style="list-style-type: none"> <li>Support IGMP Snooping V1/V2/V3</li> <li>Support fast leave of ports</li> </ul>
Port mirroring	Support N : 1 port mirroring
QoS	<ul style="list-style-type: none"> <li>Support SP (Strict Priority)</li> <li>Support SWRR (Simple Weighted Round Robin)</li> <li>Support WRR (Weighted Round Robin)</li> <li>Support 802.1p port trust mode</li> <li>Support DSCP port trust mode</li> <li>Support a maximum of 8-queue service quality mapping</li> <li>Support Tail Drop</li> <li>Support storm suppression</li> <li>Support port speed limit</li> </ul>
ACL	<ul style="list-style-type: none"> <li>Support MAC ACL</li> <li>Support IPv4 ACL</li> </ul>
Loading and upgrade	<ul style="list-style-type: none"> <li>Support FTP/TFTP/HTTP upgrade</li> <li>Support configuration import and export</li> </ul>
Cloud management	<ul style="list-style-type: none"> <li>Support configuration delivery from ProFi cloud platform</li> <li>Support log reporting and fault detection</li> <li>Support remote maintenance: reboot, backup, upgrade</li> </ul>
Local visualization management	<ul style="list-style-type: none"> <li>Support discovery of such network devices as routers, switches, APs based on LLDP</li> <li>Support IP camera discovery based on ONVIF protocol</li> <li>Support automatic generation of topology</li> <li>Support local view and main view</li> <li>Support online/offline status detection for devices</li> <li>Support remotely rebooting IP cameras</li> <li>Support loop alerts</li> <li>Support custom device types and device names</li> </ul>

## Software Specifications

### Management and maintenance

- Support CLI configuration
- Support Telnet remote configuration
- Support configuring through Console port
- Support SNMP V1/V2/V3
- Support web management and maintenance
- Support system logs
- Support log classification
- Support NTP
- Support Ping & Tracert tests
- Support memory and CPU monitoring

### Certificates

CCC, FCC, CE, RoHS

**IP-COM**  
World Wide Wireless

## Headquarters

IP-COM Networks Co.,Ltd.

Tel: +86 755-27653089

Fax: +86 755-27657178

Email: [marketing@ip-com.com.cn](mailto:marketing@ip-com.com.cn)

Website: [www.ip-com.com.cn](http://www.ip-com.com.cn)

ADD: Tower E3, No1001, Zhongshanyuan Road, Nanshan District, Shenzhen, China.

Copyright©2020 IP-COM Networks Co.,Ltd.All Rights Reserved.

